

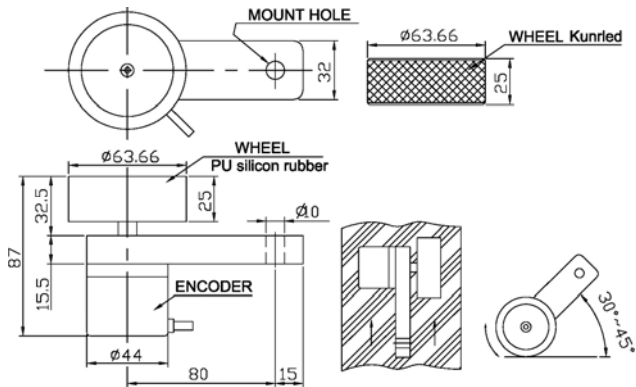
HTR-MW

ROTARY ENCODER METER WHEEL



- Meter Wheel
- Rubber Wheel, Metal Knurled Wheel
- Push Pull, Line Driver
- DC 5~26V

DIMENSION



ORDERING INFORMATION

HTR-MW

<i>Wheel Type</i>	<i>Resolution</i>	A	<i>Electronics</i>		

K: Metal Knurled
B: Rubber

***100, 10, 5, 2, 1, 0.5, 0.2, 0.1**
mm/pulse

*only with AB phase

P: Push Pull
***H:** Line Driver

ELECTRICAL SPEC.

Detection System	Incremental
Output Wave	Square Wave
Standard Resolution	*100, 10, 5, 2, 1, 0.5, 0.2, 0.1 mm/pulse * only with AB phase
Output Phase	ABZ phase
Electronics	Push Pull, Line Driver
Power Supply	DC 5~26V
Current Consumption	≤ 60 mA
Output Capacity	Sync. Current: 20 mA, Residual Voltage: 0.5V or less
Max. Response	10K ~ 150K Hz
Phase Different	A, B phase different 90°±45° (T/4±T/8), Z phase T±T/8
Wave Form Rise / Fall	1 μs or less
Polarity	Against Reverse Protection

MECHANICAL SPEC.

Type of wheel	Metal Knurled / Rubber
Wheel Circle Length	200 mm +/- 0.1%
Max. Speed	5 m / sec.
Vibration	10g (10±1,500 Hz)
Shock	20g per 11 ms
Cable	Ø4.5, 1000 mm long
Weight	≤ 500g

ENVIRONMENTAL SPEC.

Operating Temp. / Humidity	0°C ~ 60°C, RH 35% ~ 90% (No Condensation)
Storage Temp.	-20°C ~ 70°C
Protection	IP50: Dust Proof