

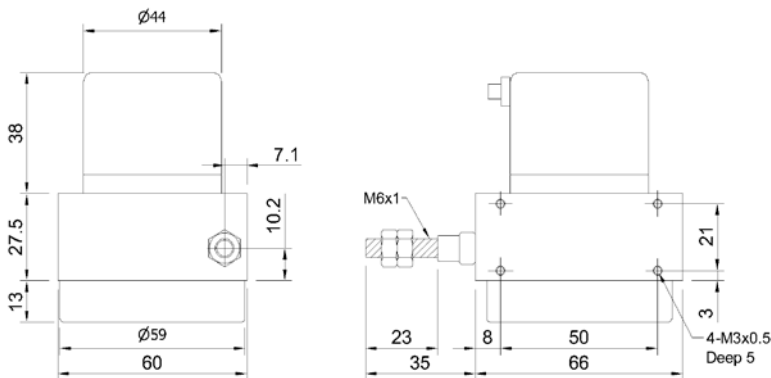
HLS-S

DISPLACEMENT SENSOR LINEAR WIRE ENCODER



- Measuring Range 1000 mm
- Push Pull, Line Driver
- DC 5~26V

DIMENSION



ORDERING INFORMATION

HLS-S-10 -	<input type="text"/>	A -	<input type="text"/>
	Resolution		Electronics
	1 : 1 mm		P: Push Pull
	01 : 0.1 mm		*H: Line Driver
	004 : 0.04 mm		

ELECTRICAL SPEC.

Detection System	Incremental
Output Wave	Square Wave
Stroke (mm)	1000
Standard Resolution (mm/pulse)	1, 0.1, 0.04 mm/pulse
Accuracy	±0.05% FS, ±1 count
Output Phase	ABZ phase
Electronics	Push Pull or Line Driver
Power Supply	DC 5~26V
Current Consumption	≤ 60 mA
Output Capacity	Sync. Current: 20 mA, Residual Voltage: 0.5V or less
Max. Response	Max. 100K Hz
Phase Different	A, B phase different 90°±45° (T/4±T/8), Z phase T±T/2
Wave Form Rise / Fall	2 µs or less
Polarity	Against Reverse Protection

MECHANICAL SPEC.

Wire Specification	Material: SUS304 with nylon coating Diameter: 0.6 mm; Breaking load: 16 Kg
Max. Travel Speed	1,000 mm / sec.
Vibration	Max. 10g (10 ~55 Hz / 1.5 mm X.Y.X. 2Hr)
Shock	20g per 11 ms
Cable	Ø4.5, 50 cm long
Weight	< 450g
Starting Torque on Spring	Max. 700 g

ENVIRONMENTAL SPEC.

Operating Temp. / Humidity	0°C ~ 60°C, RH 35% ~ 90% (No Condensation)
Storage Temp.	-20°C ~ 70°C
Protection	IP50: Dust Proof (only for encoder housing)
Life	Typical > 1 X 10 ⁶ cycles