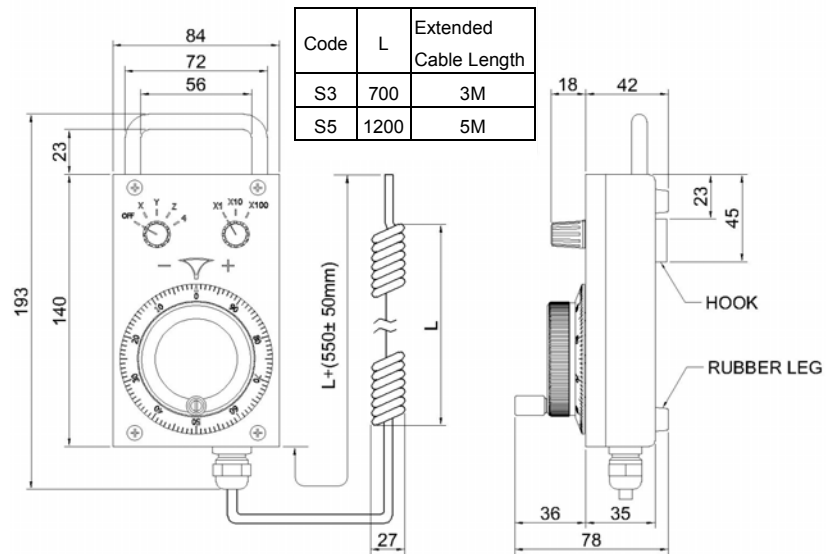


HPG-B

PENDANT HAND-HELD



ELECTRICAL SPEC. – manual pulse generator

Detection System	Incremental
Output Wave	Square Wave
Standard Number of Pulse Per Revolution	25, 100
Output Phase	AB phase
Electronics	NPN Voltage NPN Open Collector or Line Driver
Power Supply	DC 8~26V, DC 5V fixed
Current Consumption	< 60 mA
Output Capacity	Sync. Current: 20 mA, Residual Voltage: 0.5V or less
Max. Response	10K Hz
Phase Different	A, B phase different 90°±45° (T/4±T/8)
Wave Form Rise / Fall	2 µs or less

MECHANICAL SPEC. – manual pulse generator

Shaft Loading	Axial :1 Kg, Radial 2 Kg
Starting Torque (at 25°C)	260 g-cm
Max. Speed	500 rpm (Maximum 200 rpm) (Continuous)
X.Y.Z. Vibration	10 ~ 50 Hz / 1.5 mm X.Y.Z. (2hr)
Shock	50 g per 11 ms
Rotational Life	10 ⁶ cycles (200 rpm)
Weight	≤ 1500 g

ENVIRONMENTAL SPEC.

Operating Temp. / Humidity	-10°C ~ 60°C, RH 35% ~ 90% (No Condensation)
Storage Temp.	-20°C ~ 80°C
Protection Grade	IP 64

SWITCHES SPEC. (max.)

- Rotary Switch

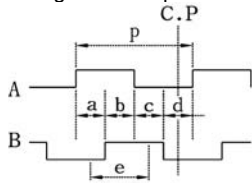
Max. Voltage	DC 30V max.
Current	30 mA
Switch Cycle (Life)	> 25,000 cycles

HPG-B

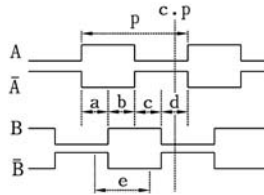
PENDANT HAND-HELD

OUTPUT WAVE FORM (Clockwise rotation is "CW Rotation" looked from the front side)

NPN Voltage / NPN Open Collector



Line Driver



- $P = 1 \text{ P/R}$; $a, b, c, d = P/4 \pm P/6$
- C.P= click point
(For 25 P/R, C.P is at each position of a, b, c, d. 25 PPR, b, c, d)
- Point e is recommended as the system switching timing. e

ELECTRICAL CONNECTION

	COLOR of WIRE	FUNCTION
DIAL BODY	○ Brown	+V
	○ Red	0V
	○ Orange	CH A
	○ Pink	CH B
	○ Yellow	CH /A
	○ Green	CH /B

	POINT TO POINT	GRAY CODE TYPE (negative logic)
Axis SW Selecting	○ OFF	Light Green
	○ X	Blue
	○ Y	Purple
	○ Z	Gray
	○ 4	
Rate SW Selecting	○ X 1	Brown /White
	○ X 10	Red /White
	○ X 100	Red /Black
	○ Switch Common	Orange /White

	Light Green	Blue	Purple
OFF	1	1	1
X	0	0	1
Y	0	1	1
Z	1	0	1
4	1	1	0

	Brown /White	Red /White
X 1	0	0
X 10	0	1
X 100	1	0

ORDERING INFORMATION

HPG - B -

Switch Function
P: Point to Point
G: Gray Code

 -

Switch Axis
4: 4 Axes
(OFF-X-Y-Z-4)

 -

Pulse per Revolution
A: 100 PPR
B: 25 PPR

 -

Electronics
V: NPN Voltage 8~26Vdc
V5: NPN Voltage 5Vdc
C: NPN Open-Collector 5~26V
L: Line Driver 5Vdc

 -

Extended Cable Length
S3: 3 m
S5: 5 m