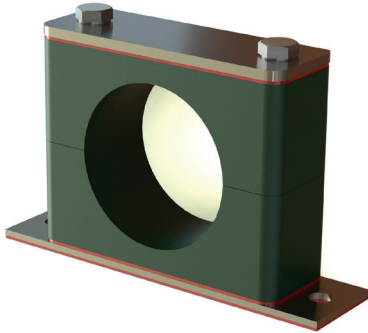


## Zubehör Accessories

### INROLED\_25, INROLED\_50 Leuchtenhalter / *luminaire bracket* 210200-09, 210200-10



Art.Nr.	Beschreibung
210200-09	INROLED_50 Leuchtenhalter, F&B geeignet, 1 Paar <i>INROLED_50 Luminaire bracket, FDA conform, pair</i>
210200-10	INROLED_25 Leuchtenhalter, F&B geeignet, 1 Paar <i>INROLED_25 Luminaire bracket, FDA conform, pair</i>

Material der Klemmbacken/ <i>jaws</i>	Polypropylen - PP/ <i>polypropylene – PP</i>
Material Deckplatte/ <i>cover plate</i>	Edelstahl V4A / <i>stainless steel V4A</i>
Material Montageplatte/ <i>mounting plate</i>	Edelstahl V4A / <i>stainless steel V4A</i>
Material Dichtungen/ <i>gaskets</i>	Silikon-Kautschuk, lebensmittelecht/ <i>silicone rubber, food-safe</i>
Material 6-kt-Schraube M6, SW10/ <i>hexagon screw</i>	Edelstahl V4A / <i>stainless</i>

210200-09 | INROLED\_50 Leuchtenhalter / *bracket*

210200-10 | INROLED\_25 Leuchtenhalter / *bracket*

