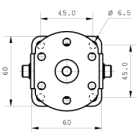
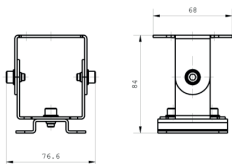
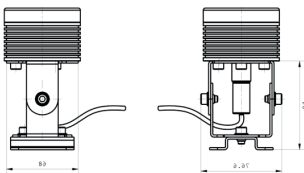
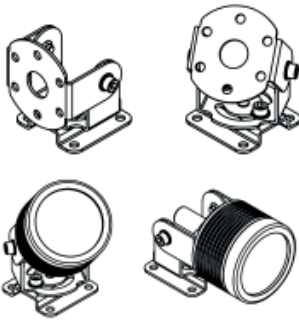


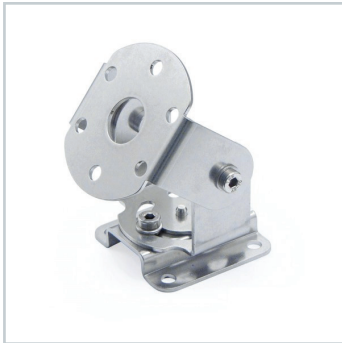
LED Zubehör  
 LED accessories


## SPOTLED II Drehwinkel

<b>Artikel-Nr.:</b>	214300-01
<b>EAN:</b>	4260556622330
<b>Zolltarifnr.:</b>	94059900

<b>Bestellnr.:</b>	214300-01
<b>Bauform:</b>	Gelenkwinkel
<b>Anzahl:</b>	1 Stück
<b>Geeignet für:</b>	SPOTLED II Aufbau
<b>Lieferumfang:</b>	Leuchtenhalter, 1 Stück, Schrauben
<b>Material:</b>	Edelstahl
<b>Abmessungen (mm):</b>	76,6 x 68 x 84 (Raummaß)
<b>Befestigung an Leuchte:</b>	über Mutter an der LED Leuchte, rückseitig
<b>Gewicht:</b>	200 g
<b>Anmerkung:</b>	Bei montierten Gelenkwinkel wird zum Anschluss der Leuchte eine gewinkelte M12 Buchse benötigt!





## SPOTLED II articulated joint

<b>Item number:</b>	214300-01
<b>EAN:</b>	4260556622330
<b>Customs tariff number:</b>	94059900

<b>Order number:</b>	214300-01
<b>Model:</b>	articulated joint
<b>Quantity:</b>	1 piece
<b>Suitable for:</b>	SPOTLED II Aufbau
<b>Scope of delivery:</b>	luminaire holder, 1 piece, screws
<b>Material:</b>	stainless steel
<b>Dimensions (mm):</b>	76,6 x 68 x 84 (cubic measure)
<b>Assembling:</b>	via nut and screws on the luminaire, rear side
<b>Weight (net):</b>	200 g

**Note:** for using the articulated joint in combination with SPOTLED II, an angled M12 socket is required to connect the luminaire!

