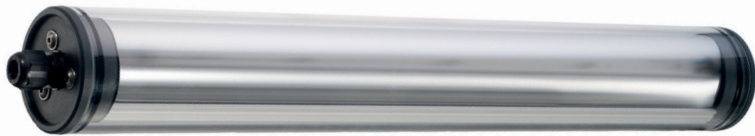


LED Rohrleuchten *LED tube luminaire*

INROLED_70 ECO | 24V DC

Borosilikatrohr / *borosilicate pipe*



Anschlusswerte / <i>connected load</i>	24 V DC $\pm 10\%$
Lichtverteilung / <i>light distribution</i>	direkt / <i>direct</i>
Entblendung / <i>glare-free</i>	Prismenabdeckung / <i>prism cover</i>
Abstrahlwinkel / <i>beam angle</i>	125°
Lichtfarbe / <i>light colour</i>	5200 - 5700 K
Farbwiedergabe (Ra) / <i>color rendering</i>	Ra > 85
Schutzart / <i>system of protection</i>	IP67/IP69K
Schutzklasse / <i>class of protection</i>	III
Betriebstemperatur / <i>operating temperature</i>	-10 °C bis +45 °C / <i>-10 °C to +45 °C</i>
Lebensdauer / <i>lifetime</i>	> 60.000 Betriebsstunden / <i>operating hours (L70/B10)</i>
Leuchtengehäuse / <i>luminaire body</i>	Borosilikatglas, Aluminiumgrundkörper, Enddeckel aus PA / <i>Borosilicate glass, aluminium base body, end cap made of PA</i>
Netzanschluss / <i>main supply</i>	Klemme / <i>clamp</i>
Befestigung / <i>fastening</i>	Montage über Rohrschellen (optional) / <i>installation using pipe clamps (optional)</i>
Risikogruppe / <i>risk group (DIN EN 62471)</i>	freie Gruppe / <i>free group</i>
Kaskadierbar / <i>cascadable</i>	ja / <i>yes (max. 4,0 A)</i>

INROLED_70 ECO | 24V DC | 5200K-5700K | Borosilikatrohr / *borosilicate pipe*

Art.-Nr. <i>item no.</i>	LED-Leuchte <i>LED luminaire</i>	Länge <i>length [A]</i>	Leistungsaufnahme <i>power consumption</i>	Lichtstrom <i>luminous flux</i>	Gewicht (netto) <i>weight (net)</i>
115010-01	INROLED_70 24V DC ECO	354 mm	8 W	816 lm	1200 g
115110-01	INROLED_70 24V DC ECO	513 mm	12 W	1224 lm	1700 g
115210-01	INROLED_70 24V DC ECO	650 mm	13 W	1326 lm	2200 g
115310-01	INROLED_70 24V DC ECO	921 mm	20 W	2040 lm	3000 g
115410-01	INROLED_70 24V DC ECO	1214 mm	24 W	2448 lm	4000 g

