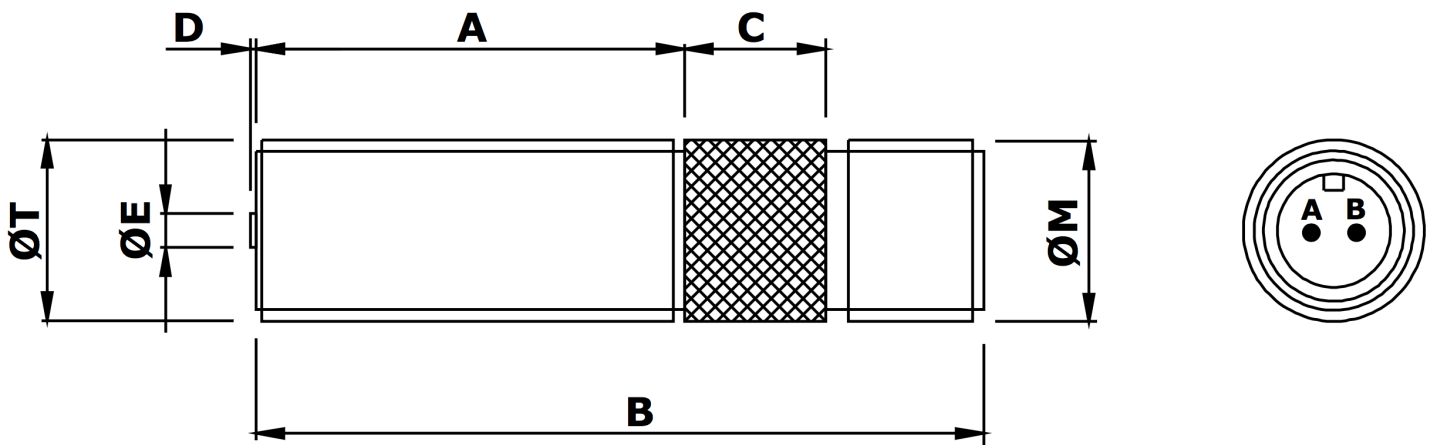


MPU3638 Magnetic Pickup



Mechanical specification

dimensions in mm unless otherwise stated

<i>Dimension</i>		<i>Part Number</i>
A	38	
B	64	
C	12 medium diamond knurl	
D	0.4 nominal	
ØE	Ø3.2 Pole Piece	
ØM	5/8" x 24 tpi UNEF-2A (connector thread)	
ØT	5/8" x 18 tpi UNF-2A (body thread)	MPU3638-I*
or	M16 x 1.5 6g	MPU3638-M*
Main body material	Stainless Steel	
End Bobbin face	Glass Filled Nylon or Polypropylene	
Locknut	1 off supplied as standard	

*Previous code MPU1301-I / MPU1301-

Electrical specification

Resistance 350Ω nominal @ 20°C

Inductance 150mH nominal

Operating temperature range -40°C to + 120°C

Voltage output 20V peak-peak [see note 1]

Minimum speed 30mm/second [see note 2]

Termination MS (screw) 10SL-4P (2-pin integral plug)

Mating connector
[see note 3] MS (screw 10SL-4S (2-pin line socket)

Notes:

1. Nominal output is a typical peak to peak voltage measured across a 10K load using a 60 tooth mild steel gear wheel of Ø6", rotating at 1000 rpm and with an air gap setting of 0.01".
2. Minimum speed in mm/second to generate 100mV peak to peak typical output under standard test conditions as in note 1.
3. Mating line connectors (straight or 90°, complete with cable bush & clamp) are available to order separately.

Reliability, Guaranteed



Logitech Electronics Limited

MADE IN THE UK

mpu3638 full v1.2 01/2020

sensorMATIC
SPECIALIST&SOLUTIONS

Sensormatic srl - Via della Beverara 13 - 40131 Bologna
Tel. +39 051 63 53 511 - smbox@sensormatic.it - www.sensormatic.it